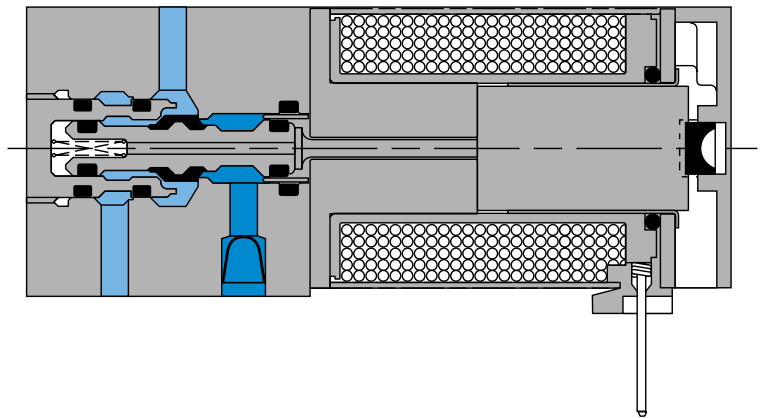


Individual mounting

inline

Circuit bar mounting

cylinder ports in base cylinder ports in valve



Function	Port size	Flow (Max)	Individual mounting
3/2 NO-NC, 2/2 NO-NC	M5	100 NI/min	inline

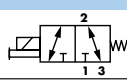
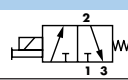
OPERATIONAL BENEFITS

1. 10 mm valve, direct solenoid operated.
2. Balanced poppet, immune to variations of pressure.
3. Short stroke with high flow.
4. The patented solenoid develops high shifting forces.
5. Powerful return spring.
6. Flow is specifically adjusted on each valve.
7. Manual operator standard on all valves.



HOW TO ORDER

Reset

Port size M5	Universal valve	NC only valve
		
Pressure range : 0 to 8,5 bar	34A-ABA-G XXX-XXX	34A-ABB-G XXX-XXX
Pressure range : vacuum	34A-BBA-G XXX-XXX	34A-BBB-G XXX-XXX

SOLENOID OPERATOR >

G **XX X- X XX***

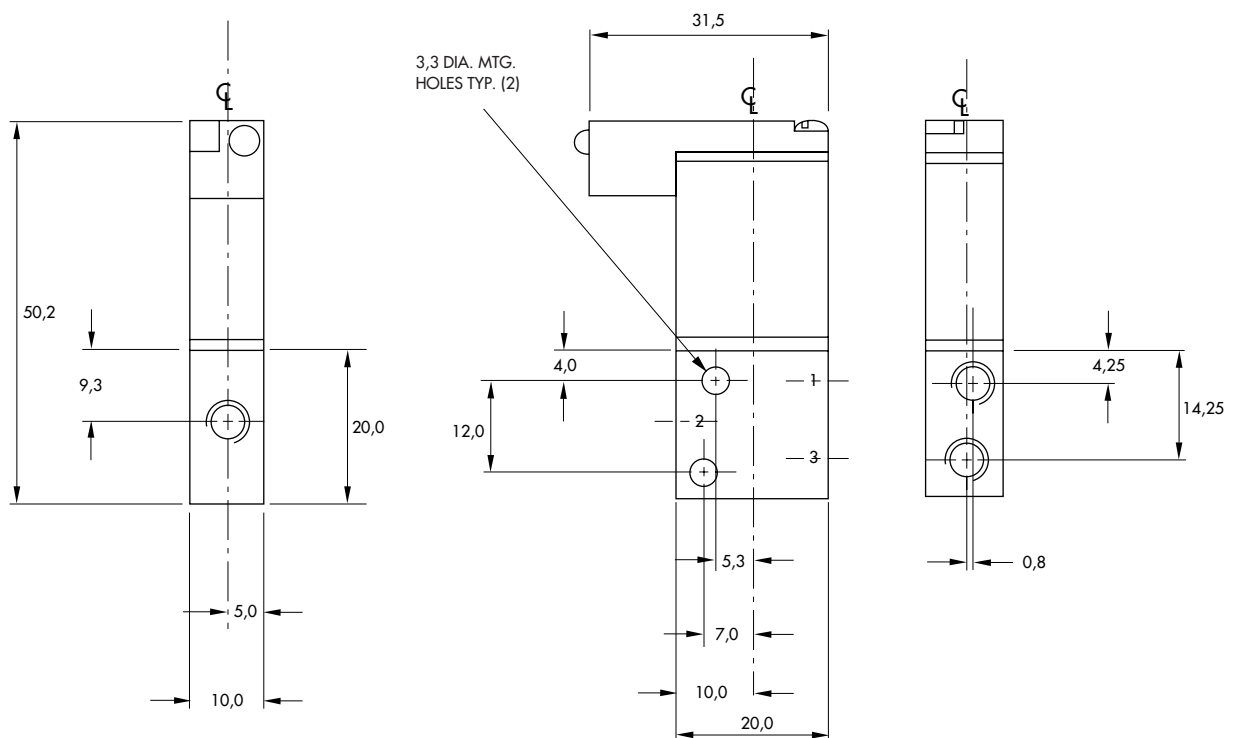
XX Voltage	X Wire length	X Manual operator	XX Electrical connection
DC 24V=/1,8W	A 45 cm	I Non-locking	KA Mini connector
DD 24V=/2,5W	C 92 cm		KT Mini connector with light
DF 24V=/4W			BA Flying leads
			BT Flying leads with light

TECHNICAL
DATA

Fluid :	Compressed air, vacuum, inert gases
Pressure range :	Vacuum to 8.5 bar
Lubrication :	Not required, if used select a medium aniline point lubricant (between 80°C and 100°C)
Filtration :	40 µ
Temperature range :	-18°C to +50°C
Orifice :	1.8 mm
Flow (at 6 bar, ΔP=1bar) :	4 W : 100 NI/min (C _v 0.1) - 2.5 W : 80 NI/min (C _v 0.08) - 1.8 W : 60 NI/min (C _v 0.06)
Leak rate :	50 cm ³ /min
Coil :	Epoxy encapsulated - 100% ED
Voltage range :	-15% to +10% of nominal voltage
Protection :	IP 54
Power :	4 W - 2.5 W - 1.8 W
Response times :	Energize : 3.4 ms
(with 4 W coil)	De-energize : 1.5 ms

Note : • Valve and coil are not interchangeable.

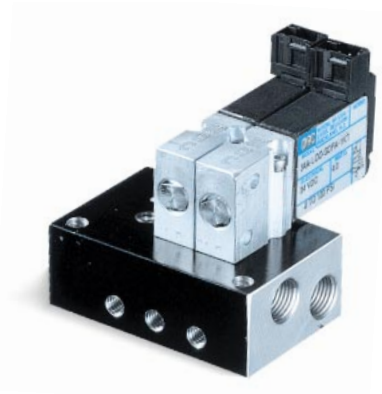
DIMENSIONS



Function	Port size	Flow (Max)	Circuit bar mounting
3/2 NO-NC, 2/2 NO-NC	M5	80 NI/min	cylinder ports in base

OPERATIONAL BENEFITS

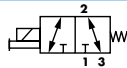
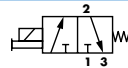
1. 10 mm valve, direct solenoid operated.
2. Balanced poppet, immune to variations of pressure.
3. Short stroke with high flow.
4. The patented solenoid develops high shifting forces.
5. Powerful return spring.
6. Flow is specifically adjusted on each valve.
7. Manual operator standard on all valves.



HOW TO ORDER

Reset

HOW TO ORDER VALVE FOR CIRCUIT BAR MOUNTING

Port size (see base)	Universal valve	NC only valve
		
Pressure range : 0 to 8,5 bar	34A-L00-Gxxx-xxx	34A-N00-Gxxx-xxx
Pressure range : vacuum	34A-M00-Gxxx-xxx	----

SOLENOID OPERATOR >

G **XX X- X XX***

XX Voltage	X Wire length	X Manual operator	XX Electrical connection
DC 24V=/1,8W	A 45 cm	1 Non-locking	KA Mini connector
DD 24V=/2,5W	C 92 cm		KT Mini connector with light
DF 24V=/4W			BA Flying leads
			BT Flying leads with light

HOW TO ORDER CIRCUIT BAR**

Port size	Side cylinder ports	Bottom cylinder ports
M5	EBP34A-001D-xx	EBP34A-002D-xx

** Other options available. Consult factory.

Number of stations (03=3 stations)

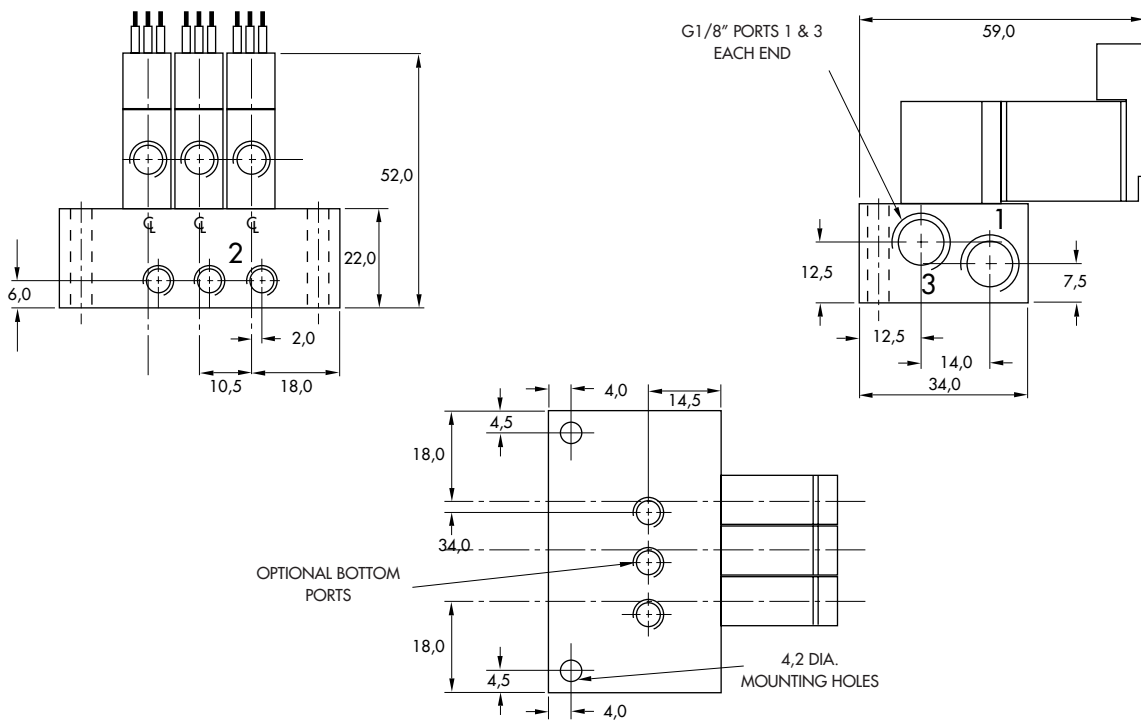
Note : click for valves mounted on base at the factory (add - 9 to the model number).

**TECHNICAL
D A T A**

Fluid :	Compressed air, vacuum, inert gases
Pressure range :	Vacuum to 8.5 bar
Lubrication :	Not required, if used select a medium aniline point lubricant (between 80°C and 100°C)
Filtration :	40 µ
Temperature range :	-18°C to +50°C
Orifice :	1.8 mm
Flow (at 6 bar, ΔP=1bar) :	4 W : 80 NL/min (C _v 0.08) - 2,5 W : 60 NL/min (C _v 0.06) - 1,8 W : 40 NL/min (C _v 0.04)
Leak rate :	50 cm ³ /min
Coil :	Epoxy encapsulated - 100% ED
Voltage range :	-15% to +10% of nominal voltage
Protection :	IP 54
Power :	4 W - 2.5 W - 1.8 W
Response times :	Energize : 3.4 ms
(with 4 W coil)	De-energize : 1.5 ms

- Note :
- Valve and coil are not interchangeable.
- Spare parts :
- Seal between valve and bar (x3) : 17948-01. • Mounting screw (x2) : 35031. • Blanking plate : M-34003.
- Options :
- Isolation of inlet and/or exhaust.

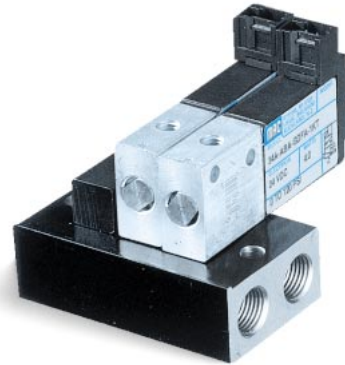
DIMENSIONS



Function	Port size	Flow (Max)	Circuit bar mounting
3/2 NO-NC, 2/2 NO-NC	M5	80 NI/min	cylinder ports in valve

OPERATIONAL BENEFITS

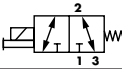
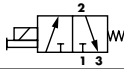
1. 10 mm valve, direct solenoid operated.
2. Balanced poppet, immune to variations of pressure.
3. Short stroke with high flow.
4. The patented solenoid develops high shifting forces.
5. Powerful return spring.
6. Flow is specifically adjusted on each valve.
7. Manual operator standard on all valves.



HOW TO ORDER

Reset

HOW TO ORDER VALVE FOR CIRCUIT BAR MOUNTING

Port size M5	Universal valve	NC only valve
		
Pressure range : 0 to 8,5 bar	34A-ABA-Gxxx-xxx	34A-ABB-Gxxx-xxx
Pressure range : vacuum	34A-BBA-Gxxx-xxx	34A-BBB-Gxxx-xxx

SOLENOID OPERATOR >

G **XX X- X XX***

XX Voltage	X Wire length	X Manual operator	XX Electrical connection
DC 24V=/1,8W	A 45 cm	1 Non-locking	KA Mini connector
DD 24V=/2,5W	C 92 cm		KT Mini connector with light
DF 24V=/4W			BA Flying leads
			BT Flying leads with light

HOW TO ORDER CIRCUIT BAR**

Port size	
M5	EBM34A-001D-xx

** Other options available. Consult factory.

Note : click for valves mounted on base at the factory (add - 9 to the model number).

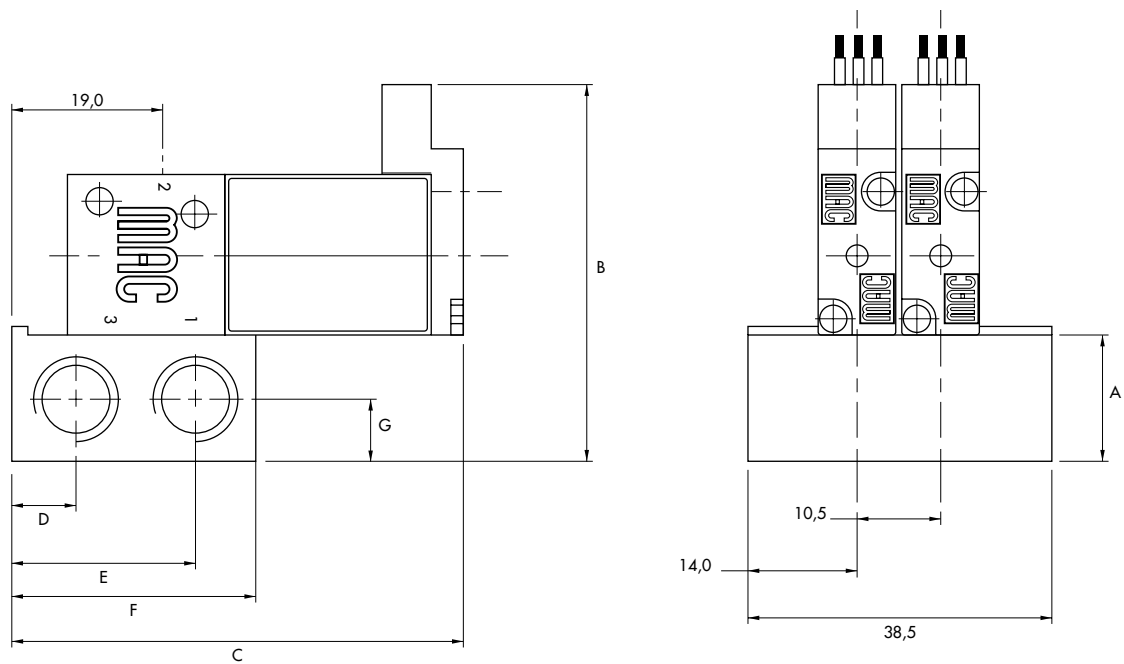
Number of stations (03=3 stations)

**TECHNICAL
DATA**

Fluid :	Compressed air, vacuum, inert gases
Pressure range :	Vacuum to 8.5 bar
Lubrication :	Not required, if used select a medium aniline point lubricant (between 80°C and 100°C)
Filtration :	40 µ
Temperature range :	-18°C to +50°C
Orifice :	1.8 mm
Flow (at 6 bar, ΔP=1bar) :	4 W : 80 NI/min (C _v 0.08) - 2.5 W : 60 NI/min (C _v 0.06) - 1.8 W : 40 NI/min (C _v 0.04)
Leak rate :	50 cm ³ /min
Coil :	Epoxy encapsulated - 100% ED
Voltage range :	-15% to +10% of nominal voltage
Protection :	IP 54
Power :	4 W - 2.5 W - 1.8 W
Response times :	Energize : 3.4 ms
(with 4 W coil)	De-energize : 1.5 ms

- Note :
- Valve and coil are not interchangeable.
- Spare parts :
- Seal between valve and bar (x3) : 17008-01. • Mounting screw (x2) : 35031. • Blanking plate : 30456-A.
- Options :
- Isolation of inlet and/or exhaust.

DIMENSIONS



Port size	A	B	C	D	E	F	G
G1/8"	16,0	47,5	57,4	8,0	23,0	31,0	8,0
M5	12,0	43,5	51,5	9,0	18,0	26,0	6,0

Codification table for voltages / Manual operator / Electrical connection

VALVE CODE >

-G XX X - 1 XX
1 2 3 4

OPTIONS AVAILABLE FOR

- solenoid valves 34 & 44 Series

1. VOLTAGE (type 34 Series)		1. VOLTAGE (type 44 Series)	
-G XX X - 1 XX	VOLTAGE	-G XX X - 1 XX	VOLTAGE
DC	24 V~/1,8 W	DA	24 V~/1,0 W
DD	24 V~/2,5 W	DC	24 V~/1,8 W
DE	24 V~/3,0 W	DD	24 V~/2,5 W
DF	24 V~/4,0 W	DF	24 V~/4,0 W
DJ	12 V~/1,8 W	DG	12 V~/1,0 W
DK	12 V~/2,5 W	DJ	12 V~/1,8 W
DM	12 V~/3,0 W	DK	12 V~/2,5 W
DN	12 V~/4,0 W	DN	12 V~/4,0 W
ED	120 V~/50 Hz (2,5 W)	ED	120 V~/50 Hz (2,5 W)

2. WIRE LENGTH (Common options for 34 & 44 Series)	
-G XX X - 1 XX	WIRE LENGTH
A	45 cm - 18"
B	60 cm - 24"
C	90 cm - 36"
D	120 cm - 48"
E	180 cm - 72"
F	240 cm - 96"
G	305 cm - 120"
H	366 cm - 144"

3. MANUAL OPERATOR

-G XX X - I XX	MANUAL OPERATOR
I	Non-locking recessed

4. ELECTRICAL CONNECTION

-G XX X - I XX	NO CONNECTOR
BA	Flying leads
BB	BA with ground wire
BC	BA with light
BD	BA with light and ground wire
BE	BA with suppression diode
BF	BA with suppression diode and ground wire
BG	BA with suppression diode and light
BH	BA with suppression diode, light and ground wire
BN	BA with suppression diode and blocking diode
BP	BA with suppression diode, blocking diode and ground wire
BR	BA with suppression diode, blocking diode and light
BS	BA with suppression diode, blocking diode, light and ground wire
BT	BA with light
BU	BA with light and ground wire
BV	BA with suppression diode and light
BW	BA with suppression diode, light and ground wire
BX	BA with suppression diode, blocking diode and light
BY	BA with suppression diode, blocking diode, light and ground wire

-G XX X - I XX	PLUG-IN CONNECTOR
KA	Mini connector with flying leads
KB	KA with ground wire
KE	KA with suppression diode
KF	KA with suppression diode and ground wire
KJ	Mini connector for KA option
KM	Mini connector for KB option
KN	KA with suppression diode and blocking diode
KP	KA with suppression diode, blocking diode and ground wire
KT	KA with light
KU	KA with light and ground wire
KV	KA with suppression diode and light
KW	KA with suppression diode, light and ground wire
KX	KA with suppression diode, blocking diode and light
KY	KA with suppression diode, blocking diode, light and ground wire